

# LD26 & LD26A

## High Power Linear Reflector LED System



Data sheet - Page 1

LD26 comes in two versions. A symmetric 82° reflector (LD26) and the LD26A with an asymmetric reflector tilted at 8deg. By mounting the LEDs within a linear reflector, there is no uneven spotting from lenses or loss of output from just using the LED itself. Designed with the latest LED technology to create a continuous wash, the LED spacing is maintained across multiple lengths, so no dark spots! It offers great flexibility to the designer, with a range of options that suit most applications, details and project budgets.

### Key Features

- Superb continuous lighting capabilities
- Maintained LED spacing across multiple lengths
- Reflectors focus the light to where it is needed
- Custom made lengths as standard, up to 2.1m
- Linked version available for curved applications
- High power for its compact size
- Available with Switched, 0-10V, DMX or Dali drivers

### Specification

#### Applications



#### Beam Angles

LD26 - 82° & LD26A - 82° with 8° tilt

#### LED type

Cree XPG2

#### Colour temperature

2700K\*\* / 3000K | 5000K

Drive Current (mA)	350	500	350	500
LED power* (W)	1.2W	1.7W	1.2W	1.7W
CRI (typical)	93	93	75	75
Forward voltage (V) <sub>100</sub>	3.0V	3.2V	3.0V	3.2V
LED spacing	Delivered lm/m** (L <sub>100</sub> )			
50mm	2027	2767	2463	3361
75mm	1318	1798	1601	2185
100mm	1014	1383	1232	1681
Lumens per circuit watt***	84	81	103	99

LED lifetime (to 70% lumen maintenance) 50,000hrs at a max ambient temperature of 35°C

#### Materials

Silver anodised aluminium body, PMMA acrylic lid, Aluminium reflector, ABS end caps.

#### Wiring

Comes pre-wired with 2m lead, can be specified with up to 10m at extra cost

#### IP rating

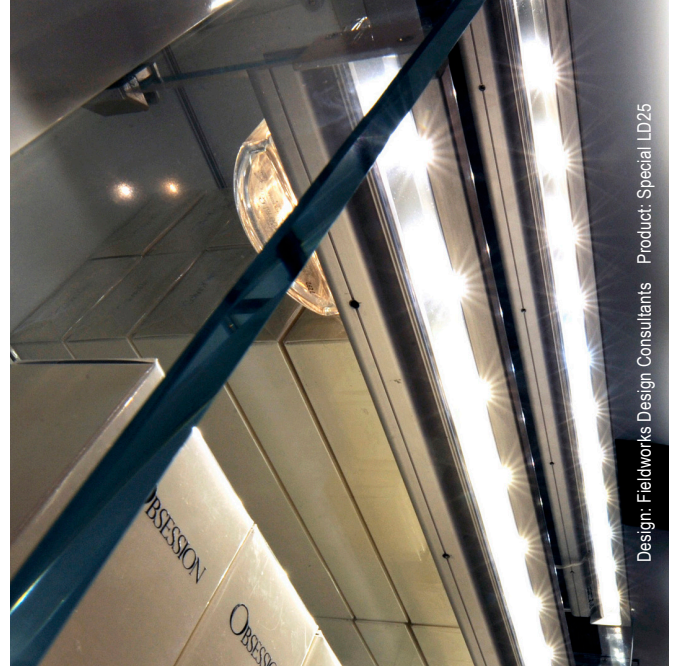
IP40 (IP54 available)

\*LED wattage includes losses associated with using an 85% efficient driver

\*\* 2700K lumen output is 12% lower than the 3000K figure listed

4000K lumen output is 14% higher than the 3000K figure listed (80 CRI)

\*\*\*Data shown allows for 50mm spacing



Design: Fieldworks Design Consultants Product: Special LD25



# LD26 & LD26A

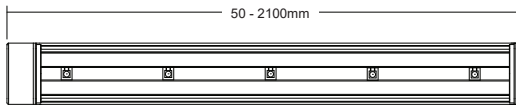
High Power Linear Reflector LED System



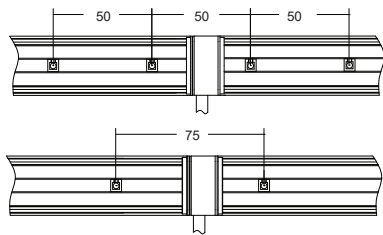
Data sheet - Page 2

## Fixing Options and Dimensions

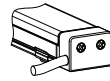
Custom made lengths



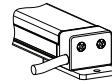
LED spacing maintained over multiple lengths



**/SC**  
Spring Clip Fixing



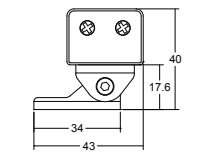
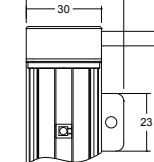
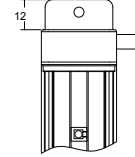
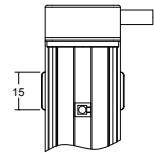
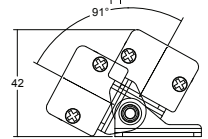
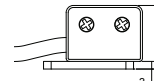
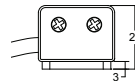
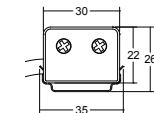
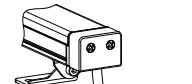
**/BEM**  
Bracket End Mounting  
Max 1000mm length



**/BSM**  
Bracket Side Mounting



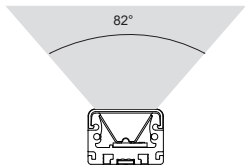
**/ABM**  
Adjustable Bracket Mounting



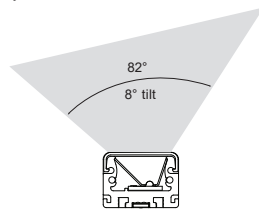
Cable entry is from the side as standard. With the adjustable brackets it is rear cable entry. (Dimensions in mm)

## Reflector options

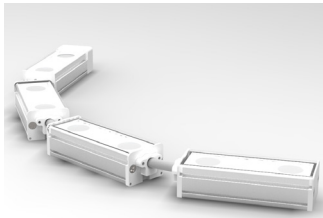
**LD26**  
Symmetric



**LD26A**  
Asymmetric



## Linked sections



Around curves LD26 can be specified in smaller sections depending on the radius. These are hard wired together so the LED spacing is maintained.

## Photometrics

Photometric files are included in the design pack which can be downloaded from the LD26/LD26A product page on the website.

## Order Codes and Options

Product code	LED colour	LED spacing	Fixing option	Cable entry	IP rating	Length
LD26 (A) - 350 - 500	<input type="text"/>	<input type="text"/>	<input type="text"/>	<input type="text"/>	<input type="text"/>	<input type="text"/>

Example: LD26-500 / LW30 / 50 / ABM / SCE / IP40 / 1200mm

### Product codes with output options

1.2W LED at 350mA	<b>LD26(A)-350</b>
1.7W LED at 500mA	<b>LD26(A)-500</b>

### LED colour options

LED colour options	Suffix
Super Warm White (2200K)	/LW22
Extra Warm White (2700K)	/LW27
Warm White (3000K)	/LW30
White (4000K) - on request	/LW40
Cool White (5000K)	/LW50

\*Other LED colour temperatures are available. Please speak to a member of our sales team.

### LED spacing

50mm	/50
75mm	/75
100mm	/100

### Fixing options

Spring clips	/SC
Bracket end mounting (max length 1.2m)	/BEM
Bracket side mounting	/BSM
Adjustable bracket mounting	/ABM

### Cable entry options

Side cable entry	/SCE
Rear cable entry	/RCE
End cable entry	/ECE

### IP rating

IP40 (internal use as standard)	/IP40
IP54 rated for moist environments	/IP54

### Use with 350mA and 500mA constant current LED drivers

We have a wide range of dimmable LED drivers, 0-10V, DMX, DALI and Mains dimmable. Please see the downloads section on our website.